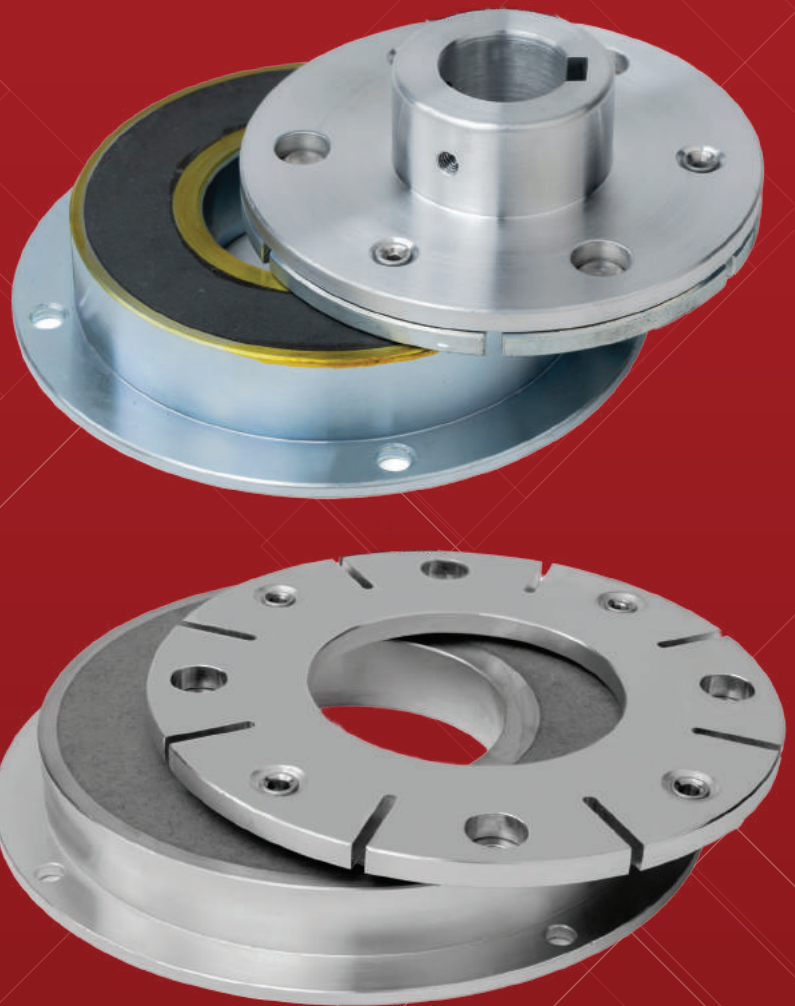


DC Flange Mounted Brake

UFB Series
(Normally off)



Electromatic Engineers Pvt. Ltd.
Udaipur (Rajasthan)



UNITORQ's DC Normally Off Brakes (Flange Mounted) have been meticulously designed for high and consistent performance, offering a torque range from 08 to 2550 N.m. These brakes are offered in three distinct models.

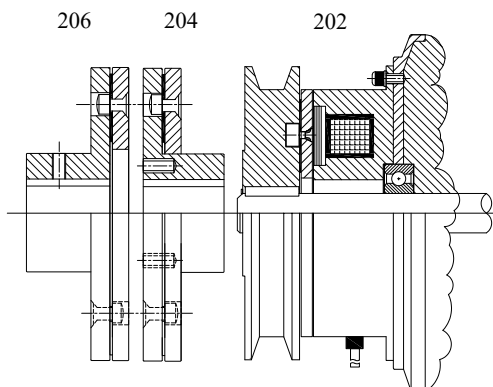
Remarkably, they require no maintenance and feature a distinctive pre-stressed spring from high-quality German spring steel. Additionally, they are equipped with insulation "H" Class Coils and Non asbestos imported friction liners, ensuring the ability to withstand millions of operational cycles without succumbing to fatigue.



SALIENT FEATURES

- Simple Construction
- Zero Backlash & Stationary field "No Slip Rings"
- Compact Design
- Fast Switching Times
- Maintenance Free Long Life
- Special Prestressed Leaf Spring
- Single plate dry operations
- Insulation Class "F"
- Asbestos free imported friction liners
- Low inertia of rotating parts
- Uniform operating characteristics
- High operating frequency and reliability

MOUNTING

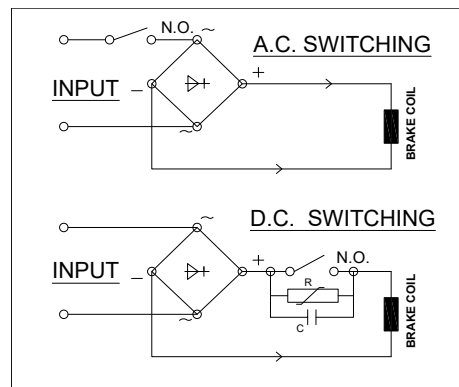


WORKING

These types of brakes are normally-off type and operates on power. When power is given to stator (coil), the armature is attracted towards the asbestos free friction liner of the brake stator which clamps the rotating component stop at once.

On switching off the electric power in the unique prestressed spring pulls the armature plate back into its original position and brake gets positively released with no residual torque.

ADVISABLE SWITCHING



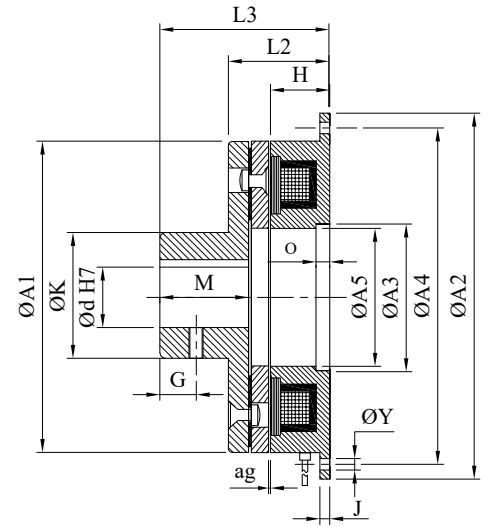
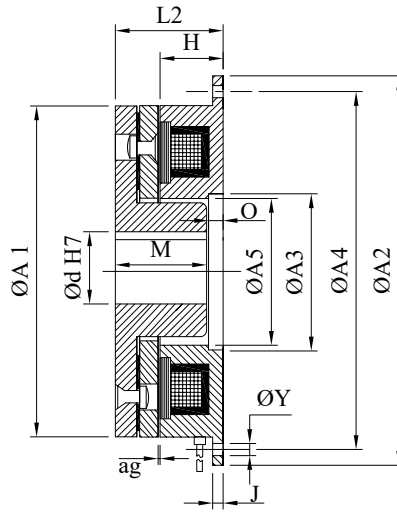
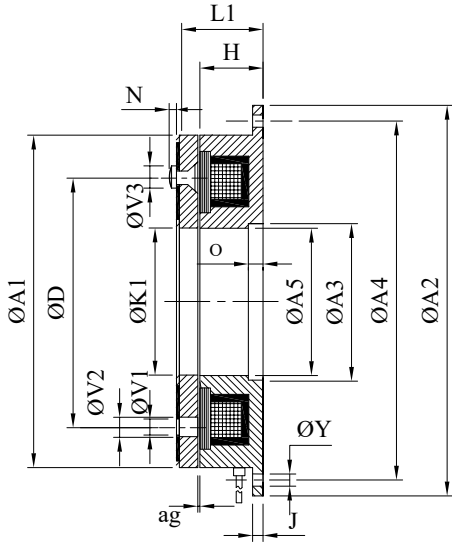
Normally Off type brakes operates on D.C. voltage, hence A.C. to D.C. conversion is done by means of a suitable rectifier.

Switching of the brake can be on either sides. However, once application demands higher switching frequency, faster engagement and disengagement time, switching must be carried out on D.C. side. To restrict the high inductive voltage, back EMF a suitable suppressor & capacitor network has to be provided across the contactor coil.

Design : 202

Design : 204

Design : 206



Size/ Torque Nm	Voltage DC	Input/ Wattage	Max. rpm	Bore d H7			A1	A2	A3	A4	A5	D	G
				Pilot	Std.	Max							
8	24/96/ 105/ 190/ 205 *Other Voltages! on request	11.5	8000	10	10,15	17	63	80	35	72	33	46	5
15		20	6000	10	15,17	20	80	100	42	90	40	60	8
30		21	5000	14	20,25	30	100	125	52	112	49	76	10
60		28	4000	14	20,30	35	125	150	62	137	59	95	12
125		38	3000	20	30,40	45	160	190	80	175	77	120	15
250		45	3000	25	40,50	60	200	230	100	215	97	158	20
500		70	2000	25	50,60	80	250	290	125	270	122	210	30
625		75	1500	25	60,80	100	320	355	160	335	148	250	35
1240		130	1500	30	80,110	130	400	440	200	420	196	315	35
2550		200	1000	40	100,120	130	500	540	250	520	246	400	40

Size	H	J	K	K1	LI	L2	L3	M	N	O	VI	V2	V3	Y	ag
8	18	2.0	28	34.5	22.0	25.5	37.0	15	1.5	3.5	3x3.2	3x6.5	3x5.0	4x4.5	0.3
15	20	2.5	32	41.5	24.5	28.5	44.5	20	1.8	4.0	3x4.2	3x8.0	3x7.0	4x5.5	0.3
30	22	3.0	42	51.5	28.0	33.0	53.0	25	2.0	5.0	3x5.2	3x10.5	3x9.0	4x6.5	0.4
60	24	3.5	50	61.5	31.0	37.0	61.0	30	2.5	5.5	3x6.2	3x12.0	3x10.0	4x6.5	0.4
125	26	4.0	65	79.5	35.5	43.5	74.5	39	2.5	6.0	3x8.2	3x15.0	3x13.0	4x9.0	0.4
250	30	5.0	84	99.5	42.0	51.0	90.0	48	3.5	7.0	3x10.2	3x18.0	3x16.0	4x9.0	0.6
500	35	6.0	105	125	49.0	60.0	119.0	55	5.0	8.0	4x12.2	4x22.0	4x20.0	4x11.0	0.6
625	44	14	135	160	63.0	83.0	131.0	64	10.0	9.0	4x12.2	4x28.0	4x28.0	8x11.0	0.8
1240	54	17	175	200	79.0	99.0	155.0	76	12.0	11	4x18.2	4x32.0	4x30.0	8x14.0	1.0
2550	70	22	225	250	100	125.0	200.0	100	15.0	14	4x20.2	4x35.0	4x32.0	8x14.0	1.2

1Nm=0.102 kgm = 0.737 lb-ft=10.2 kgcm
 Specifications are subject to change with-
 out prior notice

Cable Length approx 400 m
 All dimensions are in mm only



Clutches & Brakes

"PACE SETTER IN POWER TRANSMISSION"

REGISTERED HEAD OFFICE :

8-B, Saheli Marg, Udaipur - 313001

Rajasthan, India

Phone : +91 294 2526933

Mobile : +91 9001992823 / 9001995895

E-mail : sales@unitorq.in/ sales@clutchesbrakes.com

Website : www.unitorq.in / www.clutchesbrakes.com

PRODUCTION UNIT I :

E-104 B-105, ROAD NO. 3, RIICO

Industrial Area, Gudli, Udaipur - 313024

PRODUCTION UNIT II :

E-104 A, ROAD NO. 3, RIICO

Industrial Area, Gudli, Udaipur - 313024

PRODUCTION UNIT III :

G I - 173, RIICO Industrial Area,

Gudli, Udaipur - 313024

SALES OFFICES :

Delhi :

105-A, PAL MOHAN PLAZA, 11/56, D.B.GUPTA ROAD,

OPP. P.P. JEWELLERS, KAROL BAGH, NEW DELHI(05)

Tel : 011-42131213, Mobile No : +91 9810255901 / +91 91166 29966

Email Id : amardeep@clutchesbrakes.com / marketing@unitorq.in

Kolkata :

20/9/F, G. C. Bose Sarani, Kamala Bagan,

Post Konnagar - 712235, Dist. Hooghly (W.B.),

Phone : 033-26746308, Mobile No : +91 9433046308 / +91 91166 29970

Email Id : chakrabortysk@clutchesbrakes.com / kolkata@clutchesbrakes.com

Ahmedabad :

89, Gajanand Industrial Hub - 2, B/h Metrix Plaza,

Jashodanagar, Hathizan Road, Vatva, GIDC, Ahmedabad - 382450

Mob : +91 9116629980, +91 9829016003

Email Id : gujarat@unitorq.in / sales@unitorq.in

SALES & SERVICE NETWORK

- | | | |
|-------------|--------------|-------------|
| - Jaipur | - Vadodara | - Surat |
| - Chennai | - Coimbatore | - Bangalore |
| - Hyderabad | - Goa | - Bilai |
| - Indore | - Mumbai | - Ludhiana |



Electromatic Engineers Pvt. Ltd.