

**SINCE 1997 | 30+ YEARS OF INDUSTRIAL EXPERTISE |**  
**PAN INDIA Sales & Service network**



Manufacturing of Electromagnetic  
DC Brakes, Clutches, Clutch and  
Brake Combinations, Motors, Brake  
Motors, Flame Proof Brakes,  
Backstop Clutches & Allied products



***ELECTROMATIC ENGINEERS PVT. LTD.***  
*Udaipur, Rajasthan, India*

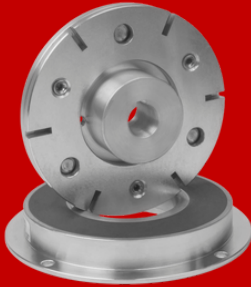


**SERIES: USB / UMB**

## **ELECTROMAGNETIC DC FAIL-SAFE BRAKES (NORMALLY ON)**

As the term Fail-Safe implies, these brakes ensure complete safety in the event of a power failure or when the power supply is disconnected.

- Torque Range: 2 Nm-3000 Nm
- Operating Voltages: 24 / 96 / 105 / 190 / 205 V  
(Custom options available)
- Protection (Custom Design) : IP56 / IP66 for enhanced safety in demanding environments



**SERIES: UFB**

## **ELECTROMAGNETIC FLANGE MOUNTED BRAKES (NORMALLY OFF)**

These brakes engage only when power is applied, ensuring controlled and reliable braking for diverse industrial applications.

- Torque Range: 1 Nm - 2550 Nm
- Operating Voltages: 24 / 96 / 190  
(Custom options available)



**SERIES: UFC**

## **ELECTROMAGNETIC FLANGE MOUNTED CLUTCHES (NORMALLY OFF)**

Designed for smooth and reliable motion transmission from drive to driven load, these are ideal for diverse industrial applications.

- Torque Range: 1 Nm - 2550 Nm
- Type: Single-plate, dry operation for low maintenance and easy installation
- Operating Voltages: 24 / 96 / 190  
(Custom options available)



**SERIES: UBC**

## **ELECTROMAGNETIC BEARING MOUNTED CLUTCHES (NORMALLY OFF)**

Designed for smooth & reliable motion transmission from drive to driven load, these are ideal for diverse industrial applications.

- Torque Range: 1 Nm - 2550 Nm
- Type: Single-plate, dry operation for low maintenance and easy installation
- Operating Voltages: 24 / 96 / 190  
(Custom options available)



**SERIES: UCB-E**

## **ELECTROMAGNETIC CLUTCH & BRAKE COMBINATIONS**

Designed for efficient motion transmission and stopping control between drive and driven loads, these units combine engaging and disengaging in compact solution.

- Torque Range: 4 Nm - 625 Nm
- Type : Single-plate, dry operation for easy installation and low maintenance
- Operating Voltages: 24 / 96 / 190  
(Custom voltages available)

## ELECTRIC MOTORS & BRAKE MOTORS

UNITORQ provides reliable and customized solutions for both standard electric motors and integrated brake motors, available with Normally On (fail-safe) and Normally Off brakes.

- Available Brands: UNITORQ, BBL, ABB, Crompton, Siemens, Marathon, Havells, and others on request
- Power Range: Up to 100 HP
- Motor Types: Standard electric motors also available (without brakes)
- Duty Types: S1 & S4
- Efficiency Classes: IE2 & IE3
- Construction: Available in Aluminium & Cast Iron (CI) bodies

## FLAME PROOF DC BRAKES & BRAKE MOTORS

Flame-proof DC brakes for hazardous areas & reliable performance.

- Torque: 5-400 Nm
- Special flame-proof enclosures
- Standalone or integrated with FLP motors
- ISI Marked & CSIR Approved

## TOOTH CLUTCHES & POWDER BRAKES-CLUTCHES

High-torque compact clutches with positive tooth locking. Specialised tooth type clutches & powder brakes available.

- Torque: 25 - 6000 Nm (For tooth clutches), Upto 500 Nm (For powder brakes)
- Low-speed engagement
- 3 standard designs + custom options (import substitute available)

## PNEUMATIC BRAKES & HYDRAULIC BRAKES

Reliable pneumatic and hydraulic brakes for industrial machinery applications.

- Torque: Up to 100 Nm
- Fail-safe (engaged by default) / Normally-off types
- Controlled Pneumatic and hydraulic actuation

## MECHANICAL BACKSTOP / ONE-WAY CLUTCHES

Unidirectional couplings for safe motion control.

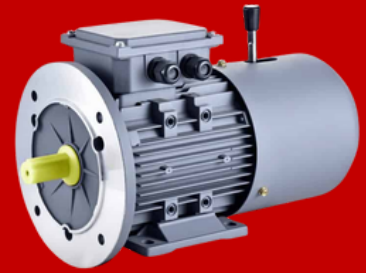
- Torque: 40-5000 Nm
- Functions: Backstop, Indexing, Overrunning
- Auto engage/disengage with rotation

## RECTIFIERS & POWER SUPPLIES

Compact rectifiers with built-in protection.

- Robust design, efficient thermal management
- Various AC/DC voltage options
- Fast switching, durable, customizable

NOTE: For catalogues and dimensional drawings of specific products, please contact us. Our team can also recommend specialized and custom-engineered solutions tailored to your application.



**SERIES: UBM**



**SERIES: U-FLP**



**SERIES: UBTC**



**SERIES: UPNB**



**SERIES: UMC**



**SERIES: UHD**



**"PACE SETTERS IN POWER TRANSMISSION"**

**REGISTERED HEAD OFFICE**

8-B, Saheli Marg, Udaipur - 313001, Rajasthan, India

Phone: +91 294 2526933

Mobile: +91 9001992823 | 9001995895

Email: sales@unitorq.in | sales@clutchesbrakes.com

Website: www.unitorq.in | www.clutchesbrakes.com

**PRODUCTION UNIT I:**

E-104 B-105, Road No. 3, RIICO  
Industrial Area, Gudli, Udaipur - 313024

**PRODUCTION UNIT II:**

E-104 A, Road No. 3, RIICO  
Industrial Area, Gudli, Udaipur - 313024

**PRODUCTION UNIT III:**

G I - 173, RIICO Industrial Area,  
Gudli, Udaipur - 313024

**SALES OFFICES:**

**DELHI:**

105-A, PAL Mohan Plaza, 11/56, D.B Gupta Road,  
Opp PP Jewellers, Karol Bagh, New Delhi (05)

Tel: 011-42131213, Mobile: +91 9810255901 | +91 9116629966

Email: amardeep@clutchesbrakes.com | marketing@unitorq.in

**KOLKATA:**

20/9/F, G.C. Bose Sarani, Kamala Bagan, Post Konnagar - 712235, Dist. Hooghly (W.B.)

Tel: 033-26746308, Mobile: +91 9433046308 | +91 9116629970

Email: chakrabortysk@clutchesbrakes.com | kolkata@clutchesbrakes.com

**AHMEDABAD:**

51, Gajanand Industrial Hub -2 , B/h Metrix Plaza , Vatva GIDC Ahmedabad 382450

Mobile: +91 9829016003 | +91 9116629980

Email: gujarat@unitorq.in | sales@unitorq.in

**SALES AND SERVICE NETWORK**

Jaipur  
Chennai  
Hyderabad  
Indore

Vadodara  
Coimbatore  
Goa  
Mumbai/ Latur

Surat  
Bangalore  
Bhilai  
Ludhiana



**ELECTROMATIC ENGINEERS PVT. LTD.**